

# ORACLE ROAD OFFICE COMPLEX

6640-6650 N. ORACLE ROAD  
(SEC of Casas Adobes Drive and Oracle Road)



Summer 2009			
<u>Bldg./Suite</u>	<u>Rentable Square Footage</u>	<u>Monthly Rent</u>	<u>Rate Per Sq. Ft.</u>
6640/120	2,942	\$5,148.50	\$21.00
6640/130	1,810	\$3,092.08	\$20.50

- ◆ Modified Gross Lease (Tenant pays electric and janitorial)
- ◆ Base Rent is subject to (i) pro-rata share of common area and building operating expense, real estate tax, insurance premium increases after the Base Year, and (ii) annual escalations.
- ◆ Tenant building identification signage available.



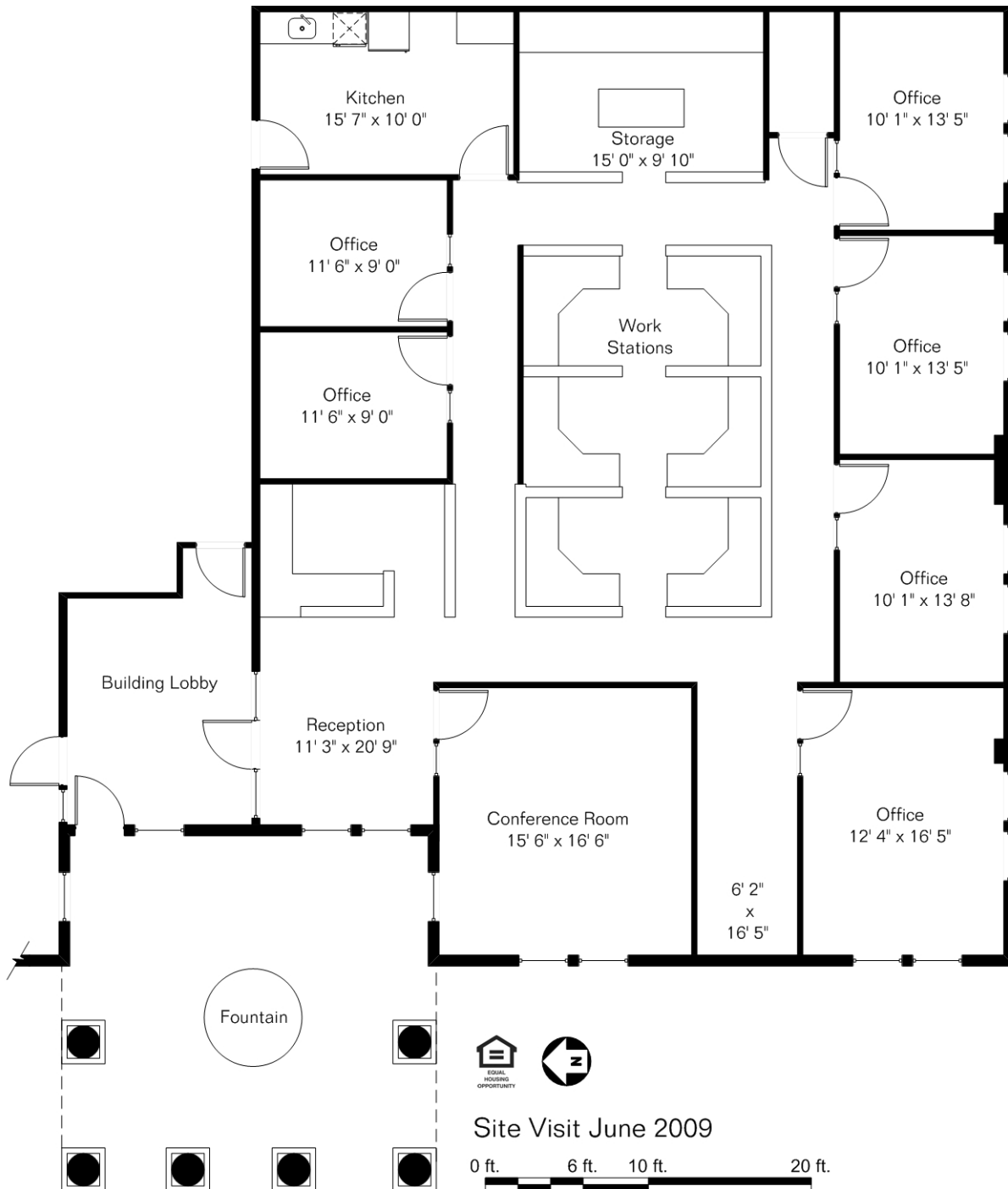
FOR MORE INFORMATION, PLEASE CONTACT  
M.A.S. REAL ESTATE SERVICES, INC.  
MICHAEL A. STILB OR ANDREA KRUG  
(520) 888-5127

# 6640 N Oracle Rd

## Suite 120

Presented by  
MAS Real Estate Services  
(520) 888-5127

The square footages and room size information are deemed to be reliable but are not guaranteed and should be independently verified.



Site Visit June 2009

0 ft. 6 ft. 10 ft. 20 ft.

Copyright 2009 Floor Plans First! LLC  
All Rights Reserved.

[www.FloorPlansFirst.com](http://www.FloorPlansFirst.com)

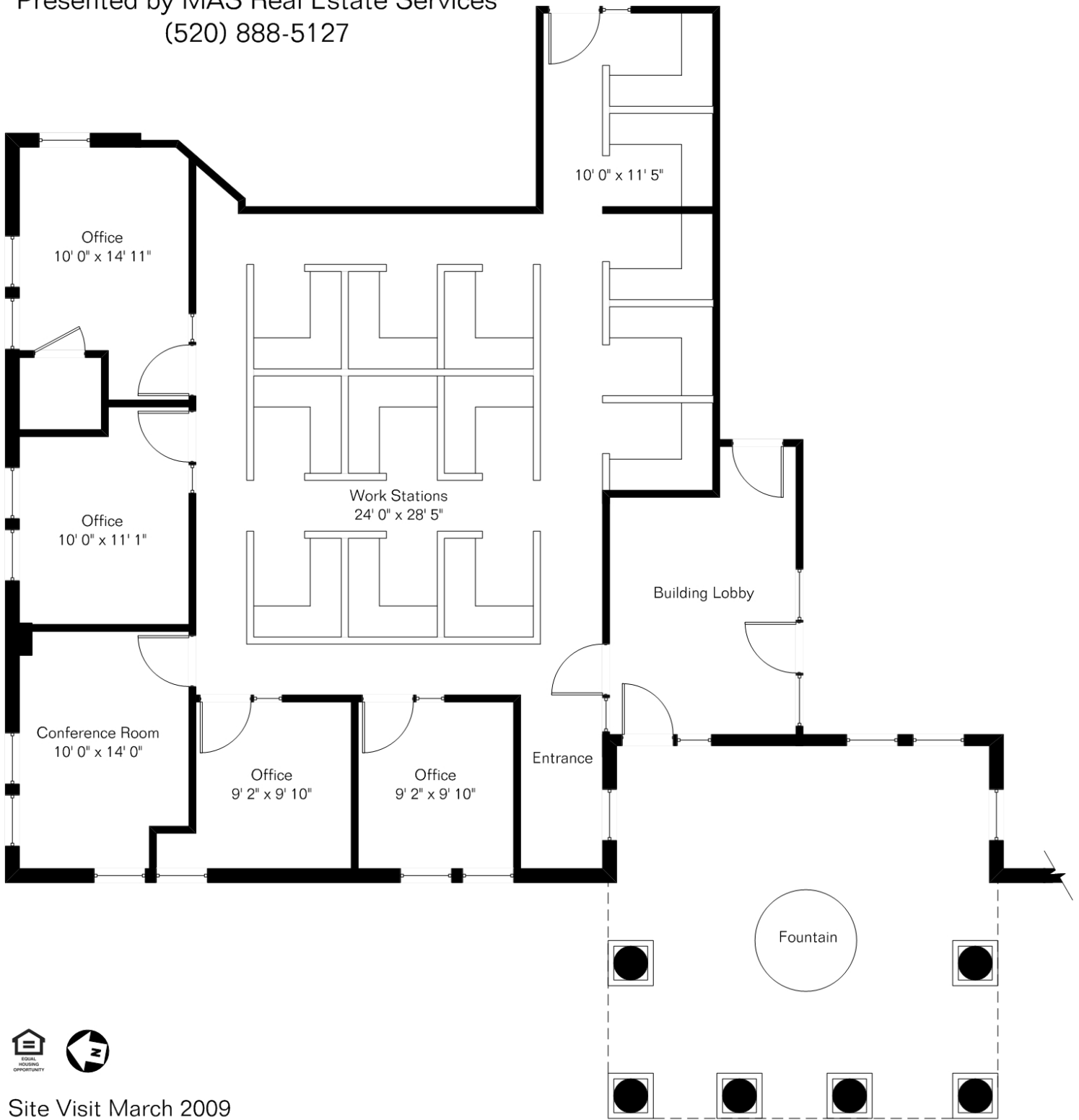
Toll Free (877) 887-1500  
Voice (520) 881-1500  
Fax (520) 791-7701

Floor Plans First!  
See the Floor Plan First!

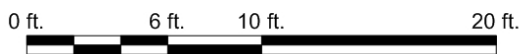
# 6640 N Oracle Rd Suite 130

Presented by MAS Real Estate Services  
(520) 888-5127

The square footages and room size information are deemed to be reliable but are not guaranteed and should be independently verified.



Site Visit March 2009



Copyright 2009 Floor Plans First! LLC  
All Rights Reserved.

[www.FloorPlansFirst.com](http://www.FloorPlansFirst.com)

Toll Free (877) 887-1500  
Voice (520) 881-1500  
Fax (520) 791-7701

